

MONTHLY MEMBERSHIP PROGRESS REPORT

District 321C2

Results as of: 6/30/2020

GMT:

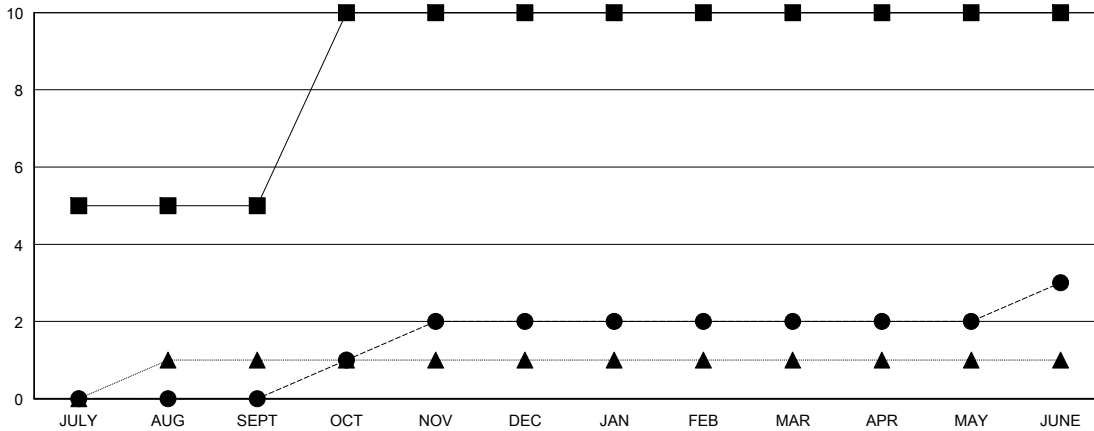
LOCATION INDIA

GMT CA

Clubs			
RESULTS FOR 2019-2020			
QUARTER	NEW CLUB GOAL	NEW CLUBS	DROPPED CLUBS
JULY/AUG/SEPT	5	0	1
OCT/NOV/DEC	5	2	1
JAN/FEB/MAR	0	0	0
APR/MAY/JUNE	0	1	0

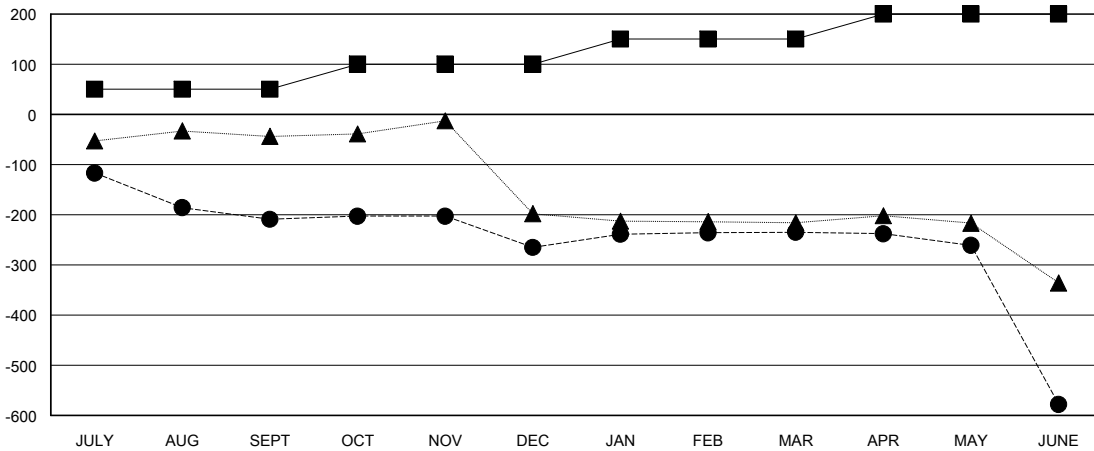
Members			
RESULTS FOR 2019-2020			
QUARTER	MEMBER GROWTH NET GOAL	MEMBER GROWTH ACTUAL	DROPPED MEMBERS ACTUAL (including transfers)
JULY/AUG/SEPT	50	53	243
OCT/NOV/DEC	50	54	105
JAN/FEB/MAR	50	80	39
APR/MAY/JUNE	50	81	404

GOALS AND ACTUAL NEW CLUBS CUMULATIVE



- - CURRENT YEAR GOALS FOR NEW CLUBS
- - CURRENT YEAR ACTUAL NEW CLUBS
- ▲ - LAST YEAR ACTUAL NEW CLUBS

GOALS AND ACTUAL MEMBERS CUMULATIVE



- - MEMBER GROWTH NET GOAL
- - MEMBER GROWTH ACTUAL
- ▲ - LAST YEAR MEMBERSHIP ACTUAL

DROPPED CLUBS: 2	36 CLUBS OF 81 ADDED 1 OR MORE NEW MEMBERS	GENDER DISTRIBUTION
		MALE 2,085 (71.21%)
		FEMALE 843 (28.79%)
DROPPED MEMBERS	CLICK HERE FOR CUMULATIVE MEMBERSHIP DATA	TOTAL FAMILY UNIT MEMBERS 1,680
DECEASED 10		FAMILY MEMBERS PAYING HALF DUES 1,060
CLUB CANCELLED 72		
OTHER 709		
TOTAL 791		